

DIETRICH OLDENDORFF 100,449 DWT Bulk Carrier

53

☐ Contents ☐ By Builder ☒ By Ship Type



DIETRICH OLDENDORFF 100,449 DWT Bulk Carrier 53

Oshima Shipbuilding Co., Ltd. delivered DIETRICH OLDENDORFF, a 100,449-DWT bulk carrier, to OLDENDORFF DRYBULK GmbH & Co. KG, in March 2020.

Features

- 1. This vessel has an optimized hull form for carrying grain, ore, coal, and hot coil, and large deadweight(100,449 MT)
- 2. This vessel has dedicated bilge gathering tank for storage of hold wash water, and gray water tank for storage of domestic wastewater.
- 3. Wide hatch cover improves cargo handling efficiency.
- 4. Advanced Flipper Fins & Rudder Fin which improve pro-

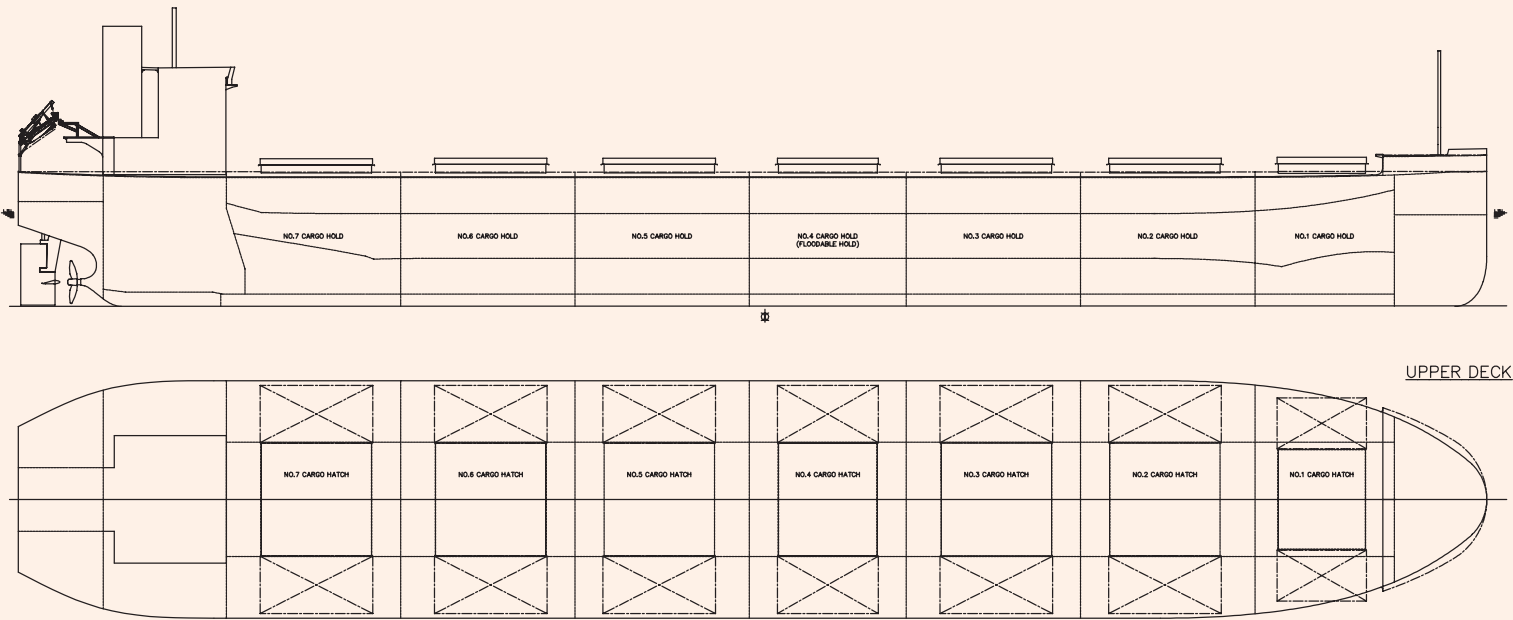
pulsion efficiency are installed.
5. Special bow form, Seaworthy Bow improves speed perfor-

mance in rough sea conditions as compared to ordinary bows.

PRINCIPAL PARTICULARS

Length (o.a.)	234.96 m
Breadth (mld.)	38.00 m
Depth (mld.)	20.62 m
Draft (mld.)	15.013 m
Gross tonnage	53219
Deadweight	100,449 MT

Main engine	MITSUI MAN B & W 6G60ME-C9.5
MCR (kw×rpm)	9,000 kw × 72.0 rpm
Speed (service)	14.00 knots
Complement	25
Classification	NK
Loading capacity (grain)	115,356 m³
Builder	Oshima Shipbuilding Co., Ltd.



AQUAVITA AIM

82,192 DWT Bulk Carrier

56

☐ Contents ☐ By Builder ☒ By Ship Type



AQUAVITA AIM 82,192 DWT Bulk Carrier 56

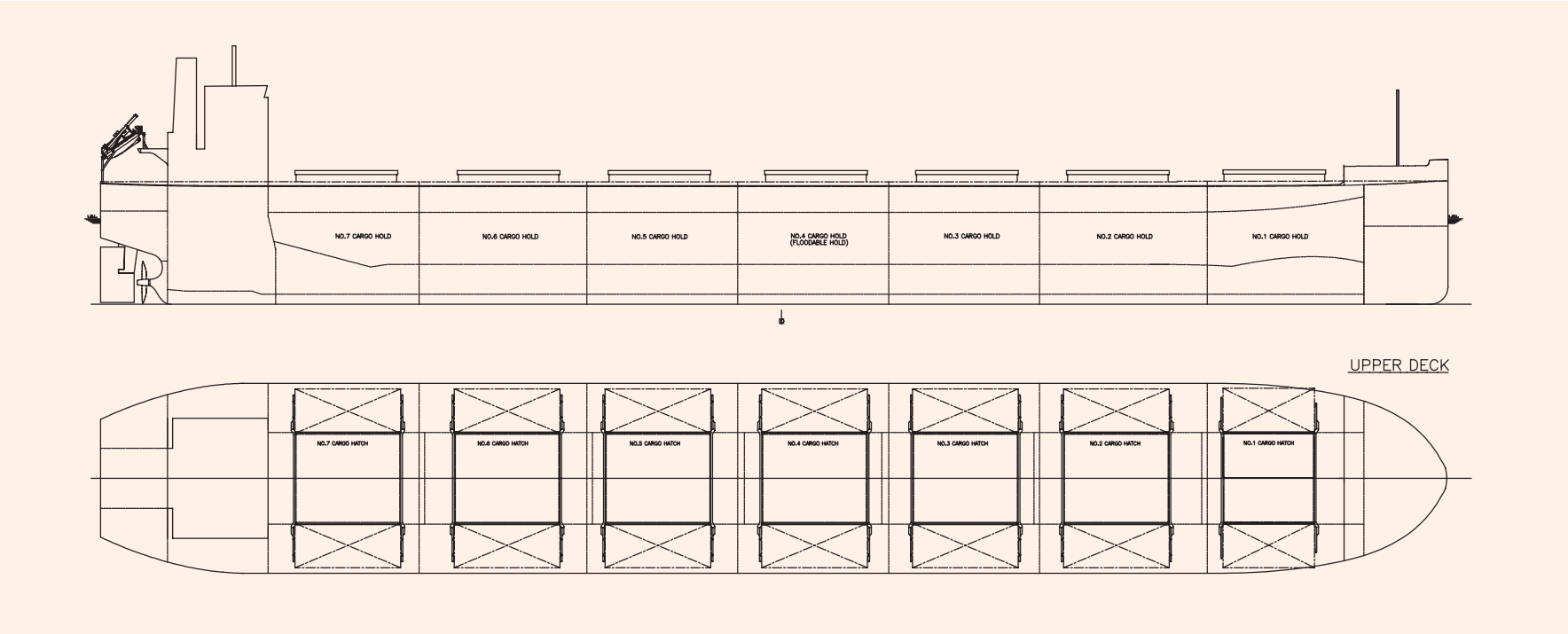
Oshima Shipbuilding Co., Ltd. delivered AQUAVITA AIM, a 82,192-DWT bulk carrier, to SEAFARERS SHIPPING, INC. , in November 2019.

Features

- 1. This vessel has largest deadweight of Panamax bulkers in the world with shallow draft and Wide hatch cover improves cargo handling efficiency.
- 2. Advanced Flipper Fins & Rudder Fin which improve propulsion efficiency are installed.
- 3. Special bow form, Seaworthy Bow improves speed performance in rough sea conditions as compared to ordinary bows.

PRINCIPAL PARTICULARS

Length (o.a.)	228.995 m	Main engine	MITSUI MAN B & W 6S60ME-C8.5
Breadth (mld.)	32.26 m	MCR (kw×rpm)	9,120 kw × 84.0 rpm
Depth (mld.)	19.98 m	Speed (service)	14.5 knots
Draft (mld.)	14.48 m	Complement	24
Gross tonnage	43310	Classification	BV
Deadweight	82,192 MT	Loading capacity (grain)	97,710 m³
		Builder	Oshima Shipbuilding Co., Ltd.



NORD AMAZON 64,499 DWT Bulk Carrier

63

☐ Contents ☐ By Builder ☒ By Ship Type



NORD AMAZON 64,499 DWT Bulk Carrier 63

Oshima Shipbuilding Co., Ltd. delivered NORD AMAZON, a 64,499-DWT bulk carrier, to DAMPSKIBSSELSKABET NORDEN A/S, in July 2020.

Features

- 1. This vessel has an optimized hull form for carrying grain, ore, coal, hot coil, sulphur, and cement, and large dead-weight(64,499 MT) with shallow draft(13.518 m).
- 2. This vessel has bilge gathering tank for storage of hold wash water, and gray water tank for storage of domestic wastewater.
- 3. Wide opening folding type hatch cover and four sets of high performance Jib cranes (30MT) are installed for

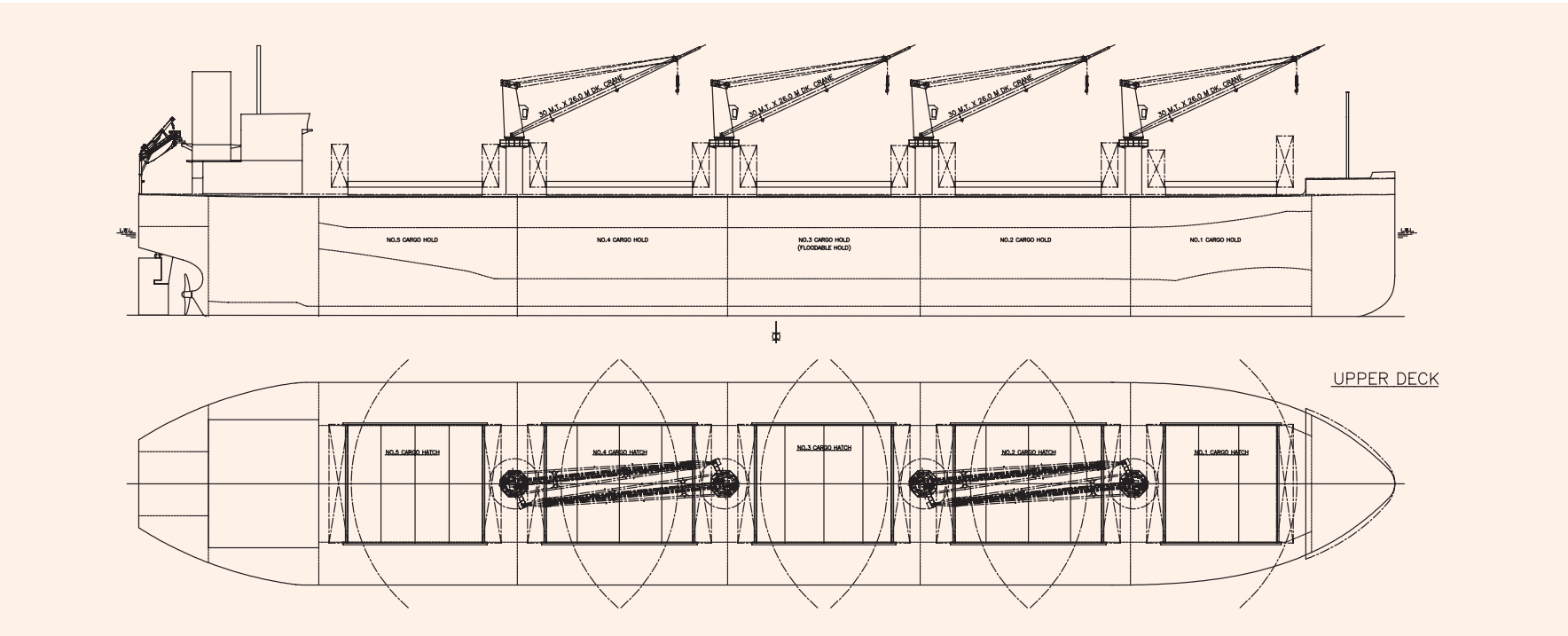
- efficient cargo handling.
- 4. Advanced Flipper Fins & Rudder Fin which improve propulsion efficiency are installed.

- 5. Special bow form, Seaworthy Bow improves speed performance in rough sea conditions as compared to ordinary bows.

PRINCIPAL PARTICULARS

Length (o.a.)	199.95 m
Breadth (mld.)	32.26 m
Depth (mld.)	19.28 m
Draft (mld.)	13.518 m
Gross tonnage	36256
Deadweight	64,499 MT

Main engine	MITSUI MAN B & W 6S50ME-C9.6
MCR (kw×rpm)	7,220 kw × 92.0 rpm
Speed (service)	13.80 knots
Complement	25
Classification	NK
Loading capacity (grain)	81,238 m³
Builder	Oshima Shipbuilding Co., Ltd.



NEW FIRST 42,756 DWT Bulk Carrier 71

☐ Contents ☐ By Builder ☒ By Ship Type



NEW FIRST 42,756 DWT Bulk Carrier 71

Oshima Shipbuilding Co., Ltd. delivered NEW FIRST, a 42,756-DWT bulk carrier, to NEW FIRST SHIPPING CO., LTD. in October 2021.

Features

- 1. This vessel has an optimized hull form for carrying a variety of cargoes, such as grain, ore, cement, hot coil, nickel ore, coal and dangerous cargoes and large dead-weight(42,756MT) with shallow draft (10,51m)
- 2. This vessel has a lot of cargo to be targeted, and WBT is not connected to accommodate various loading patterns.
- 3. Wide opening folding type hatch cover and four sets of high performance Jib cranes (30MT) are installed for

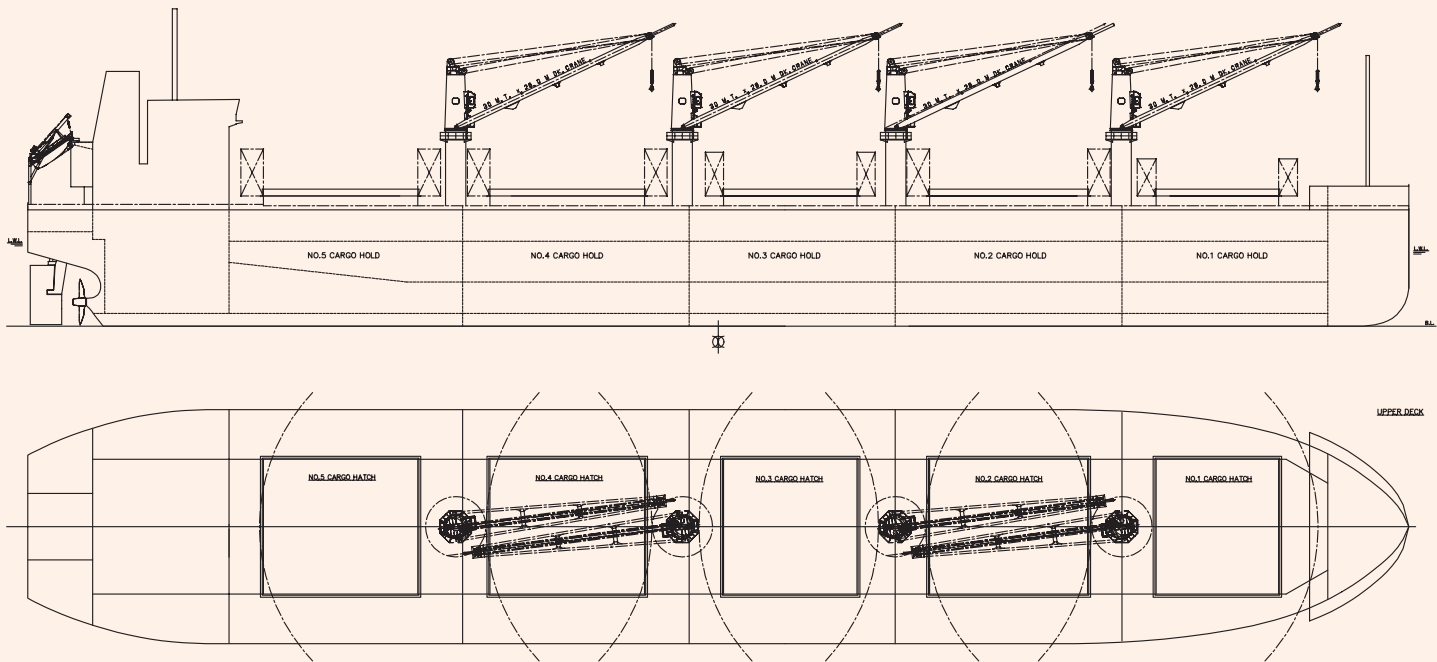
- efficient cargo handling.
- 4. Advanced Flipper Fins & Rudder Fin which improve propulsion efficiency are installed.

- 5. Special bow form, Seaworthy Bow improves speed performance in rough sea conditions as compared to ordinary bows.

PRINCIPAL PARTICULARS

Length (o.a.)	182.998 m
Breadth (mld.)	32.26 m
Depth (mld.)	15.00 m
Draft (mld.)	10.51 m
Gross tonnage	25759
Deadweight	42,756 MT

Main engine	MITSUI-MAN B&W 5S50ME-C9.6
MCR (kw×rpm)	6,250 kW × 103.0 rpm
Speed (service)	14.00 knots
Complement	24
Classification	NK
Loading capacity (grain)	55,130 m³
Builder	Oshima Shipbuilding Co., Ltd.



GROVE ISLAND 49,999 DWT Wood Chip Carrier 78

☐ Contents ☐ By Builder ☒ By Ship Type



GROVE ISLAND 49,999 DWT Wood Chip Carrier 78

Oshima Shipbuilding Co., Ltd. delivered GROVE ISLAND, a 3,616,756 cub. ft Wood Chip carrier, to AMBITIOUS LINE, S.A. in June 2020.

Features

- 1. Specially designed vessel to carry wood chips.
- 2. This vessel has large cargo hold for wooden chip loading and its self-unloading system with three electric deck cranes, four hoppers and conveyor systems achieves, four hoppers and conveyor systems achieves high unloading efficiency.
- 3. To prevent chip scattering, anti-scattering nets and water

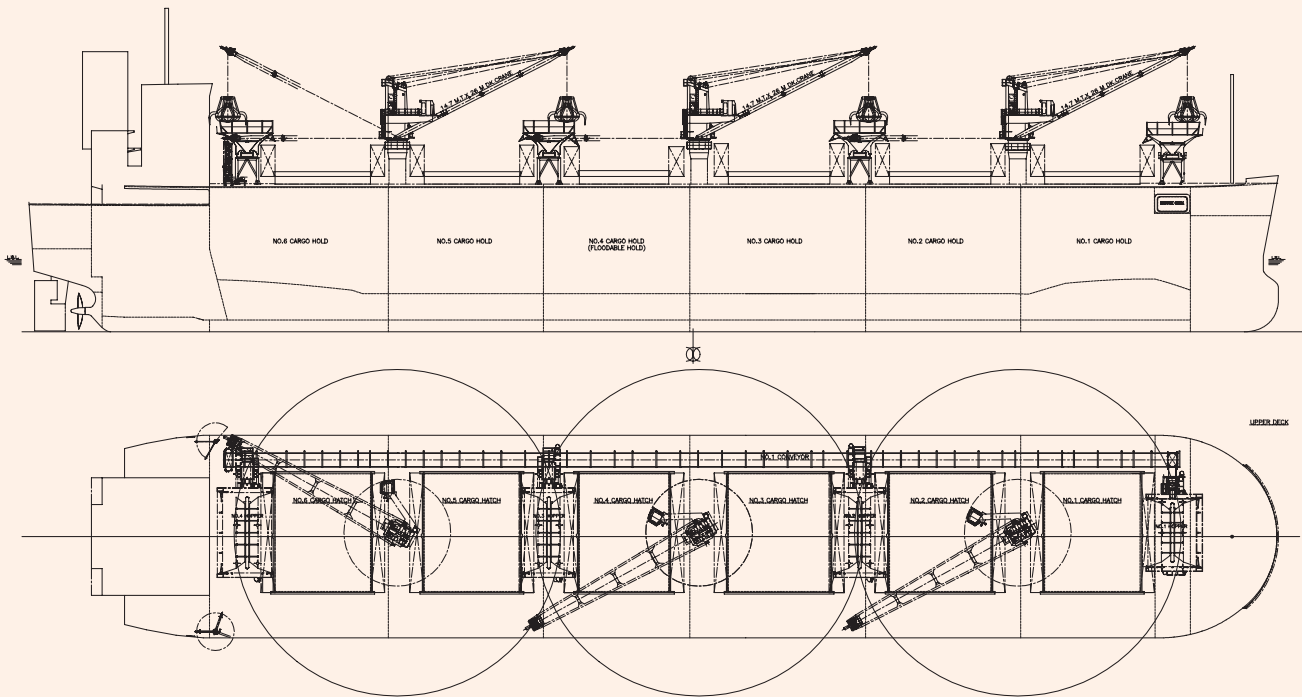
- spraying system are equipped at hopper.
- 4. Advanced Flipper Fins & Rudder Fin which improve propulsion efficiency are installed.

- 5. Special bow form, Seaworthy Bow improves speed performance in rough sea conditions as compared to ordinary bows.

PRINCIPAL PARTICULARS

Length (o.a.)	199.99 m
Breadth (mld.)	32.26 m
Depth (mld.)	22.98 m
Draft (mld.)	11.49 m
Gross tonnage	41838
Deadweight	49,999 MT

Main engine	J-ENG 6UEC50LSH-Eco-C2
MCR (kw×rpm)	7,210 kW × 99.0 rpm
Speed (service)	14.40 knots
Complement	25
Classification	NK
Loading capacity (grain)	102,415 m³
Builder	Oshima Shipbuilding Co., Ltd.



KEN ANN 36,644 DWT Bulk Carrier 79

☐ Contents ☐ By Builder ☒ By Ship Type



KEN ANN 36,644 DWT Bulk Carrier 79

Oshima Shipbuilding Co., Ltd. delivered KEN ANN, a 36,644-DWT bulk carrier, to DELICA SHIPPING S.A. in November 2019.

Features

- 1. For unitized cargo and easy cargo handling, this vessel has box shaped cargo hold.
- 2. This vessel to be able to carry log and packaged lumber in cargo holds, on upper deck in way of cargo hold part and on hatch covers.
- 3. Advanced Flipper Fins & Rudder Fin which improve propulsion efficiency are installed.

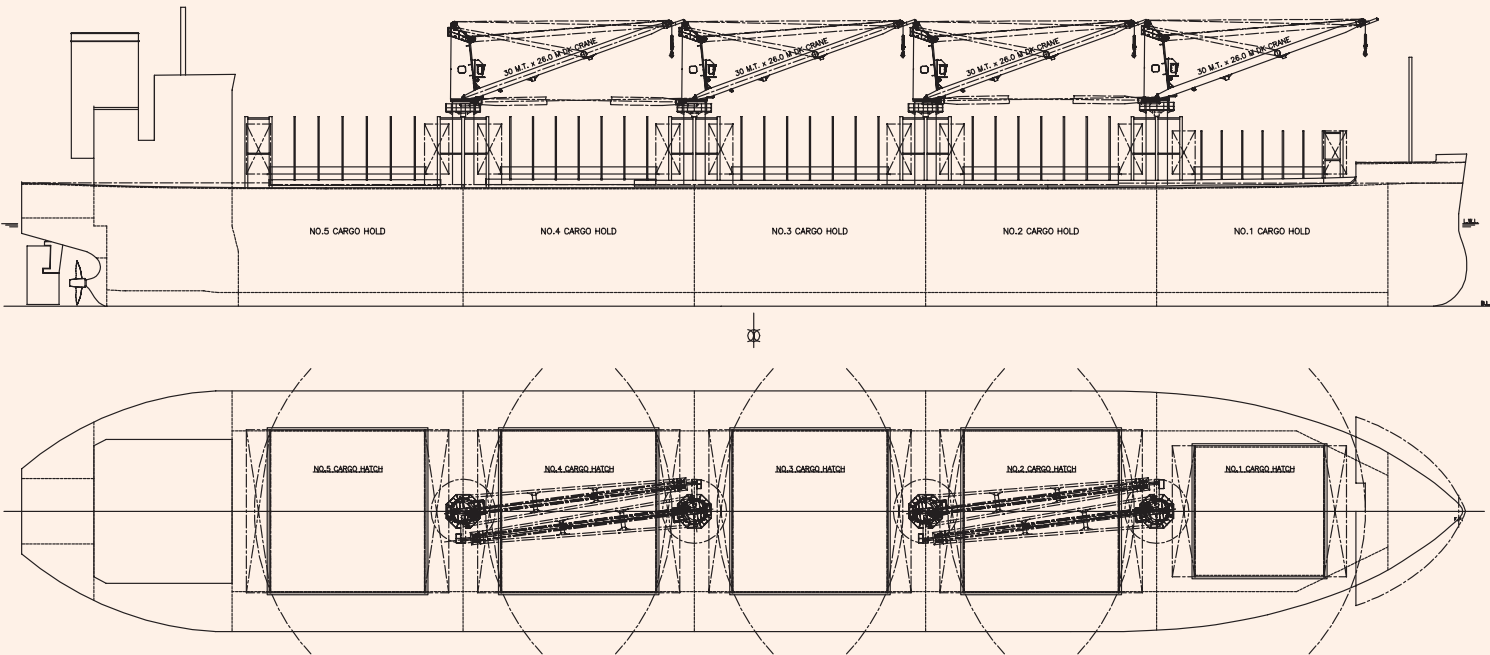
- 4. Special bow form, Seaworthy Bow improves speed performance in rough sea conditions as compared to

- ordinary bows.
- 5. Dangerous cargoes also can be loaded in cargo hold.

PRINCIPAL PARTICULARS

Length (o.a.)	179.99 m
Breadth (mld.)	30.00 m
Depth (mld.)	14.63 m
Draft (mld.)	10.310 m
Gross tonnage	22745
Deadweight	36,644 MT

Main engine	MITSUI-MAN B&W 5S50ME-C8.5
MCR (kw×rpm)	5,650 kW × 108.0 rpm
Speed (service)	14.00 knots
Complement	25
Classification	ABS
Loading capacity (grain)	47,044 m³
Builder	Oshima Shipbuilding Co., Ltd.



SAKURA ANGEL 99,623 DWT Bulk Carrier

85

☐ Contents ☐ By Builder ☐ By Ship Type



SAKURA ANGEL 99,623 DWT Bulk Carrier 85

Oshima Shipbuilding Co., Ltd. delivered SAKURA ANGEL, a 99,623-DWT bulk carrier, to OCEAN TRANSIT CARRIER S.A. in October 2020.

Features

- 1. This vessel has an optimized hull form for carrying coal, and large deadweight(99,623 MT) with shallow draft (12.841m)
- 2. This vessel has large collecting tank for storage of hold wash water, deck wash water.
- 3. A dedicated stripping line is installed in the double-bottom ballast tank, which is combined with two large

- ballast pumps to shorten the deballast time.
- 4. Advanced Flipper Fins & Rudder Fin which improve propulsion efficiency are installed.

- 5. Special bow form, Seaworthy Bow improves speed performance in rough sea conditions as compared to ordinary bows.

PRINCIPAL PARTICULARS

Length (o.a.)	249.98 m
Breadth (mld.)	43.00 m
Depth (mld.)	18.50 m
Draft (mld.)	12.841 m
Gross tonnage	57239
Deadweight	99,623 MT

Main engine	MITSUI-MAN B&W 6S60ME-C8.5-EGRBP
MCR (kw×rpm)	10,640 kW × 84.0 rpm
Speed (service)	14.30 knots
Complement	27
Classification	NK
Loading capacity (grain)	119,788 m³
Builder	Oshima Shipbuilding Co., Ltd.

